

Legend
Representative Monitoring Well and Status as of June 2024

- Water Level Above MO (20 or 65%)
- ⬠ Water Level Between MO and MT but closer to MO (6 or 19%)
- Water Level Between MO and MT but closer to MT (4 or 13%)
- ▲ Water Level Between MO and MT but closer to MT (0 or 0%)
- No Measurement (1 or 3%)
- South of Kern River Plan Area
- Arvin GSA
- Wheeler Ridge-Maricopa GSA
- Tejon-Castac Water District GSA

- WRMWSA Service Area
- AEWSD Service Area
- TCWD Service Area
- Groundwater Subbasin**
- Kern County (DWR 5-022.14)
- White Wolf (DWR 5-022.18)

- Abbreviations**
- AEWSD = Arvin-Edison Water Storage District
 - DWR = California Department of Water Resources
 - GSA = Groundwater Sustainability Agency
 - MO = Measurable Objective
 - MT = Minimum Threshold
 - RMW = Representative Monitoring Well
 - SGMA = Sustainable Groundwater Management Act
 - SMC = Sustainable Management Criteria
 - TCWD = Tejon-Castac Water District
 - UR = Undesirable Result
 - WRMWSA = Wheeler Ridge-Maricopa Water Storage District

- Notes**
1. All locations are approximate.
 2. Status is based on the SMCs in the 2022 South of Kern River Groundwater Sustainability Plan
 3. Undesirable Results are deemed to occur if groundwater levels in 40% or more RMWs are below their respective MT for four consecutive bi-annual measurements (Spring and Fall) in any management area.

- Sources**
1. Basemap is ESRI's ArcGIS Online world topographic map, obtained 8 July 2024.
 2. GSA boundaries obtained from SGMA GSA Map Viewer portal, accessed 6 May 2022.
 3. DWR groundwater basins are based on the boundaries defined in California's Groundwater Bulletin 118 - 2019 Update.

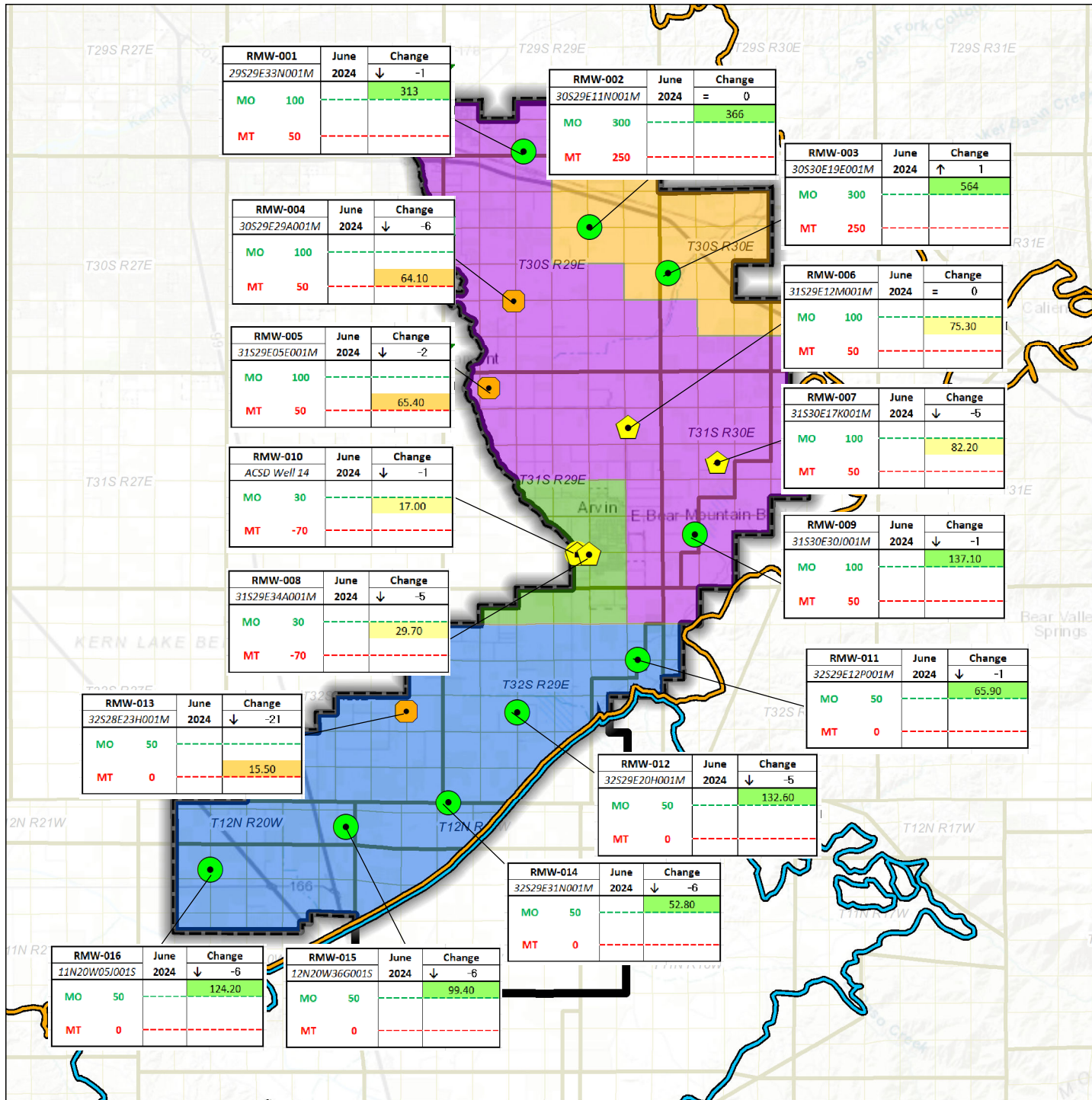


June 2024 Water Levels Relative to SMCs

South of Kern River GSP
 Kern County, CA
 June 2024
 C20055.00
Figure 1



Path: X:\C20055.00\Maps\2024\Fig1_SOKR_GW_Level_Min_June24_SMC.mxd



Legend

Representative Monitoring Well and Status as of June 2024

- Water Level Above MO (9 or 56%)
- ⬠ Water Level Between MO and MT but closer to MO (4 or 25%)
- Water Level Between MO and MT but closer to MT (3 or 19%)

Sustainability Criteria Zones

- ACSD
- Edison
- North Canal
- South Canal

- Arvin GSA
- Arvin-Edison Water Storage District

Groundwater Subbasin

- Kern County (DWR 5-022.14)
- White Wolf (DWR 5-022.18)

Abbreviations

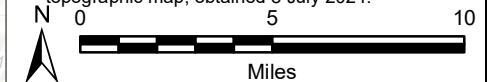
- ACSD = Arvin Community Services District
- DWR = California Department of Water Resources
- ft msl = feet above mean sea level
- GSA = Groundwater Sustainability Agency
- MO = Measurable Objective
- MT = Minimum Threshold
- RMW = Representative Monitoring Well
- SMC = Sustainable Management Criteria

Notes

1. All locations are approximate.
2. Groundwater elevations reported in units of ft msl.
3. All water levels collected during June 2024.
4. Arrow direction indicates water level change from previous month.
5. Status is based on the SMCs in the 2022 South of Kern River Groundwater Sustainability Plan.

Sources

1. Basemap is ESRI's ArcGIS Online world topographic map, obtained 8 July 2024.

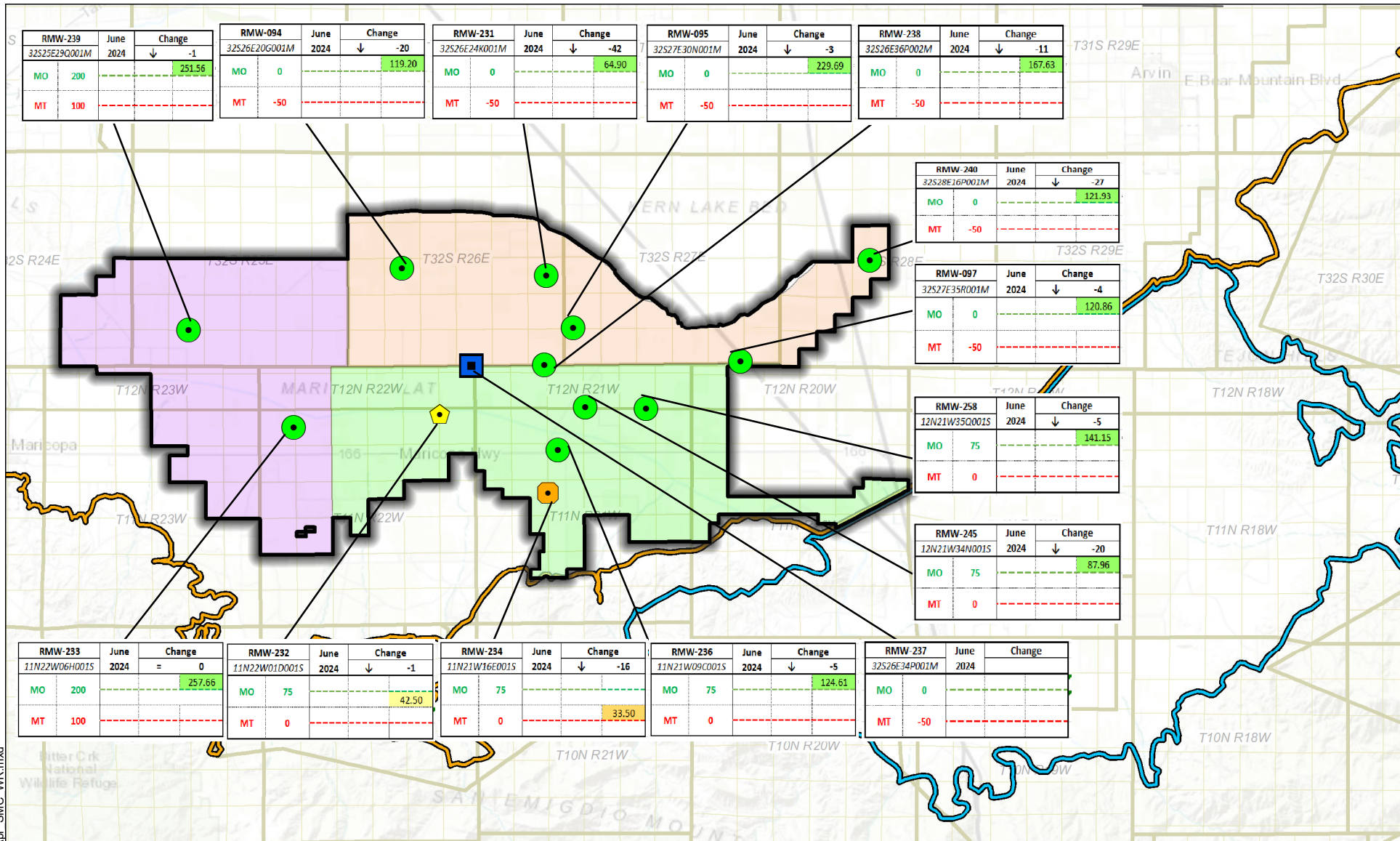


Groundwater Levels Relative to SMCs June 2024 Arvin GSA

Arvin-Edison Water Storage District
Kern County, California
June 2024
B60064.10



Figure 2



Path: X:\C20055.00\Maps\2024\6\Fig9_Apr_SMC_WR.mxd

Legend

- Kern County (DWR 5-022.14)
- White Wolf (DWR 5-022.18)
- Sustainability Criteria Zones**
- Northeast
- Southeast
- West
- Wheeler Ridge-Maricopa GSA
- Representative Monitoring Well and Status as of June 2024**
- Water Level above MO (11 or 79%)
- ◆ Water Level Between MO and MT but closer to MO (1 or 7%)
- Water Level Between MO and MT but closer to MT (1 or 7%)
- No Measurement (1 or 7%)

Notes

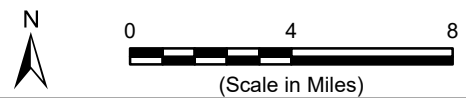
1. All locations are approximate.
2. Groundwater elevations reported in units of ft msl.
3. All water levels collected during June 2024.
4. Arrow direction indicates water level change from previous month.
5. Status is based on the SMCs in the 2022 South of Kern River Groundwater Sustainability Plan

Sources

1. Basemap is ESRI's ArcGIS Online world topographic map, obtained 8 July 2024.

Abbreviations

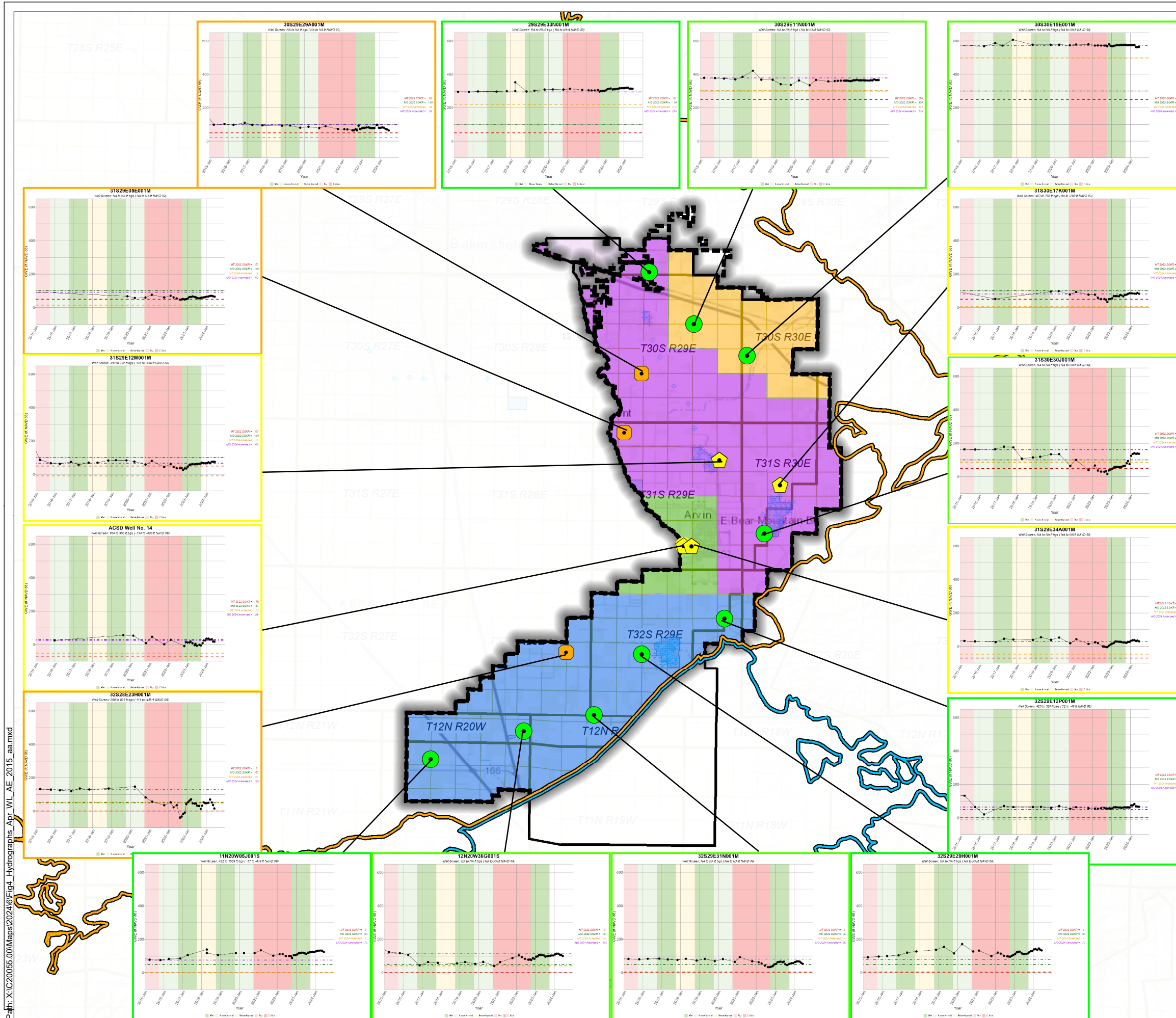
- DWR = California Department of Water Resources
- ft msl = feet above mean sea level
- GSA = Groundwater Sustainability Agency
- MO = Measurable Objective
- MT = Minimum Threshold
- SMC = Sustainable Management Criteria



Groundwater Levels Relative to SMCs June 2024

Wheeler Ridge-Maricopa GSA
 South of Kern River
 Kern County, California
 June 2024
 C20055.00

Figure 3



Legend
Representative Monitoring Well and Status as of June 2024

- Water Level Above MO (9 or 56%)
- Water Level Between MO and MT but closer to MO (4 or 25%)
- Water Level Between MO and MT but closer to MT (3 or 19%)
- Arvin-Edison Water Storage District
- Arvin GSA

Sustainability Criteria Zones

- ACSD
- Edison
- North Canal
- South Canal
- District Recovery Well
- AEWS D Spreading Basin

Groundwater Subbasin

- Kern County (DWR 5-022.14)
- White Wolf (DWR 5-022.18)

Abbreviations

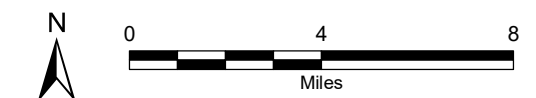
- AEWS D = Arvin-Edison Water Storage District
- DWR = California Department of Water Resources
- ft msl = feet above mean sea level
- GWE = groundwater elevation
- MO = measurable objective
- MT = minimum threshold
- RMW = Representative Monitoring Well
- SMCs = Sustainable Management Criteria

Notes

1. All locations are approximate.
2. Groundwater elevations are in feet mean sea level.
3. Status is based on the SMCs in the 2022 South of Kern River Groundwater Sustainability Plan
4. Undesirable Results are deemed to occur if groundwater levels in 40% or more RMWs are below their respective MT for four consecutive bi-annual measurements (Spring and Fall) in any management area.
5. All RMW status based on June 2024 measurements.

Sources

1. Basemap is ESRI's ArcGIS Online world topographic map, obtained 8 July 2024.
2. Water level information obtained from AEWS D.

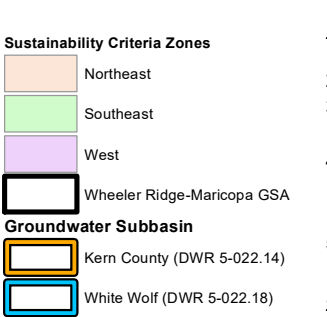
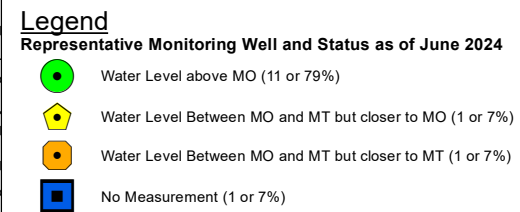
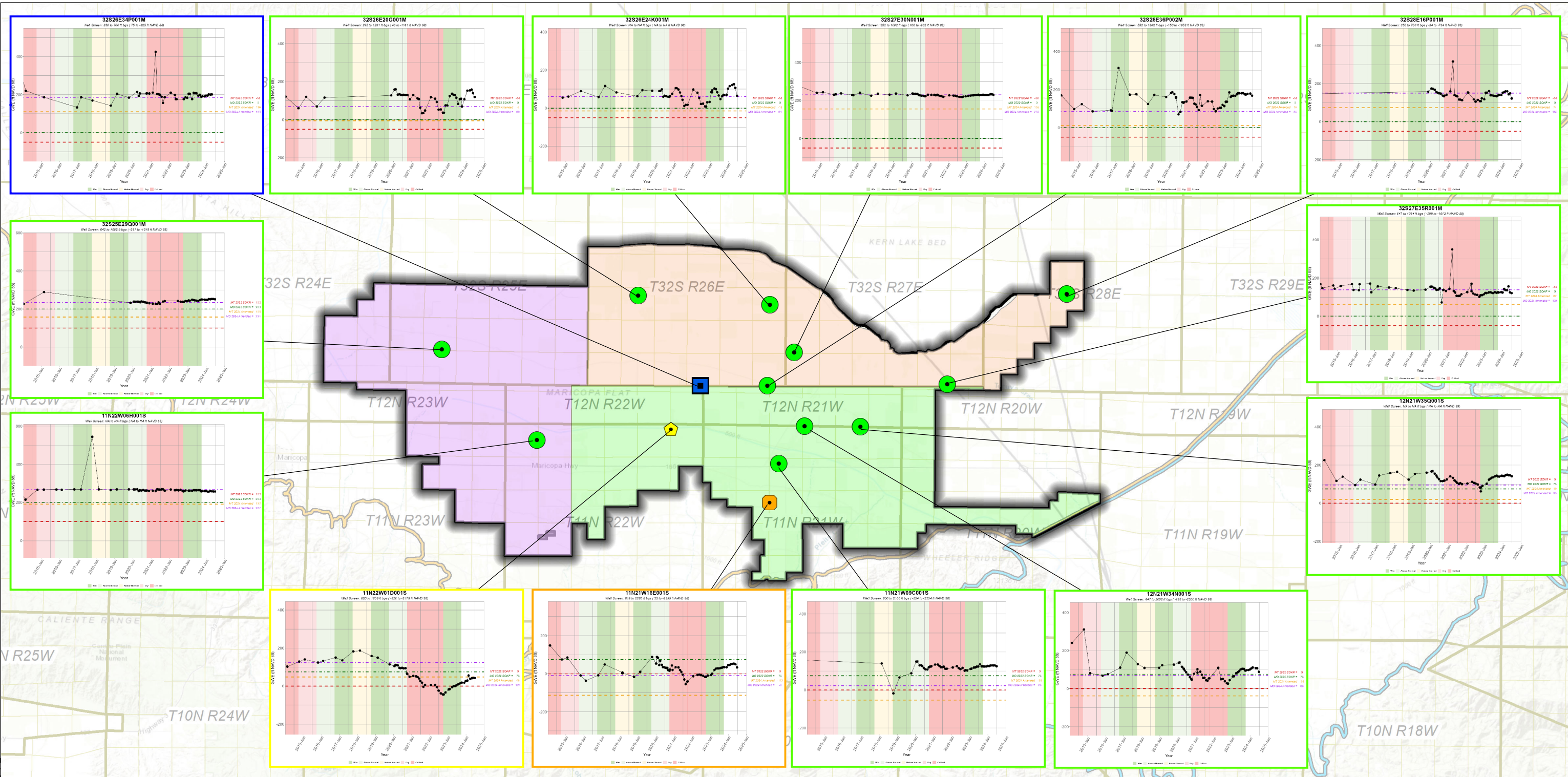


DRAFT

Hydrographs in Representative Monitoring Wells (Jan 2015 - June 2024)

Arvin-Edison Water Storage District
 Kern County, CA
 June 2024
 C20055.01
Figure 4





Notes

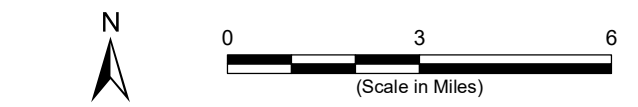
- All locations are approximate.
- Groundwater elevations are in feet mean sea level.
- Status is based on the SMCs in the 2022 South of Kern River Groundwater Sustainability Plan
- Undesirable Results are deemed to occur if groundwater levels in 40% or more RMWs are below their respective MT for four consecutive bi-annual measurements (Spring and Fall) in any management area.
- All RMW status based on June 2024 measurements.

Sources

- Basemap is ESRI's ArcGIS Online world topographic map, obtained 8 July 2024.
- Groundwater elevation data provided by WRMWS.

Abbreviations

- DWR = California Department of Water Resources
- ft msl = feet above mean sea level
- GSA = Groundwater Sustainability Agency
- MO = Measurable Objective
- MT = Minimum Threshold
- RMW = Representative Monitoring Well
- SMCs = Sustainable Management Criteria
- WRMWS = Wheeler Ridge-Maricopa Water Storage District



Hydrographs in Representative Monitoring Wells (January 2015 - June 2024)
 Wheeler Ridge-Maricopa Water Storage District
 Kern County, CA
 June 2024
 B70103.01



Figure 5